

TECH PREP: THE LINK BETWEEN EDUCATION AND ECONOMIC DEVELOPMENT



Annual Superintendents' Meeting for 2011-2012

September 1, 2011
The Reese – Harlingen
The 5th Floor, South Dining Room

Plans for the Year

- Continuing forward momentum despite challenges
- Modifying calendar of events –
 - No separate Deans/Registrars' meeting; however, Tech Prep's PEIMS handbooks available upon request
 - Minimizing time away from campuses, while planning for important regional events



Overview of Events for the Fall

- September:
 - 09/14, 9:30 a.m.—Lower Rio Grande P-16 Council
 - 09/21, 10 a.m., RGV Partnership
Release of 2011 Labor Market Report
 - 09/23, ATC Training (full day)
- October
 - 10/11, 9 a.m., Counselors' Network
 - 10/11, 11 a.m., S-TEAM Leaders
 - 10/13, Education & Career EXPO
 - 10/25, 9:30, Annual Meeting



Overview of Events for the Fall (cont.)

- November and December
 - 11/9, 9:30 a.m., Lower Rio Grande P-16 Council
 - 11/15, 9:30 a.m., Counselors' Network
 - 11/22, Tech Prep Board
 - 11/30-12/2, Lower Rio Grande P-16 ECHS/TSTEM Summit and Tech Prep Regional Conference
- Opportunity for Texas Scholars/Tech Prep Texas Scholars session at UTPA (need to hear from you!)
- Thereafter: activities continue, as reflected in Tech Prep's 2011-2012 calendar, and subject to funding constraints



Overview of Events for the Fall (cont.)

- About our Lower Rio Grande P-16 ECHS Planning
 - Planning for blending of Early College High Schools, TSTEM, and Tech Prep (partners: TEA, THSP, and Tech Prep)
 - Multiple separate meetings with colleges and universities to plan for “scaled” implementation
 - Plan is for significant innovation; participation opportunity remains open for the few Tech Prep voting members that have not joined
 - Separate calendar of events for this group, beginning with meeting beginning after this meeting ends



High School to College Linkages Reports

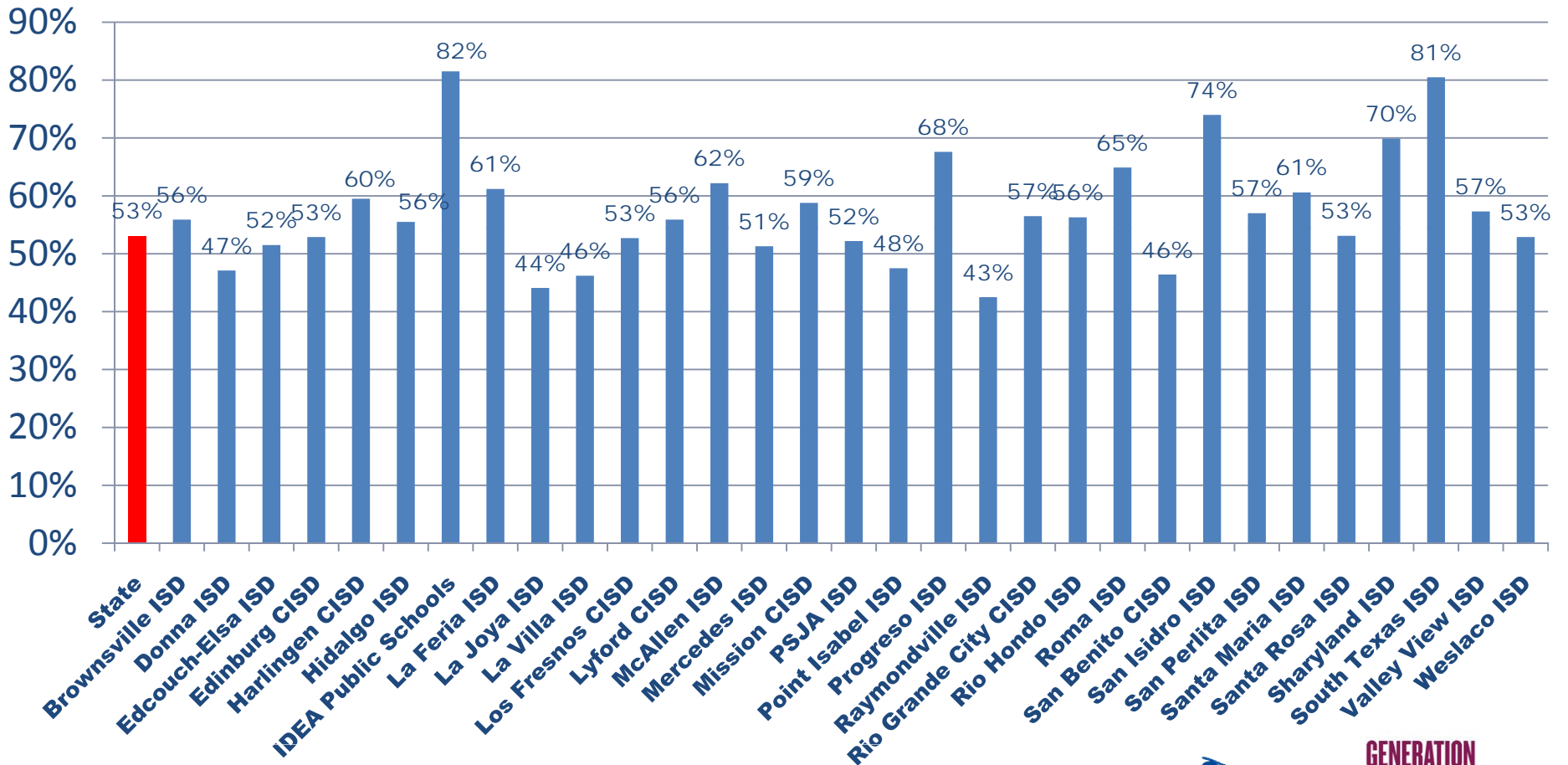
Data Source:

Texas Higher Education Coordinating Board

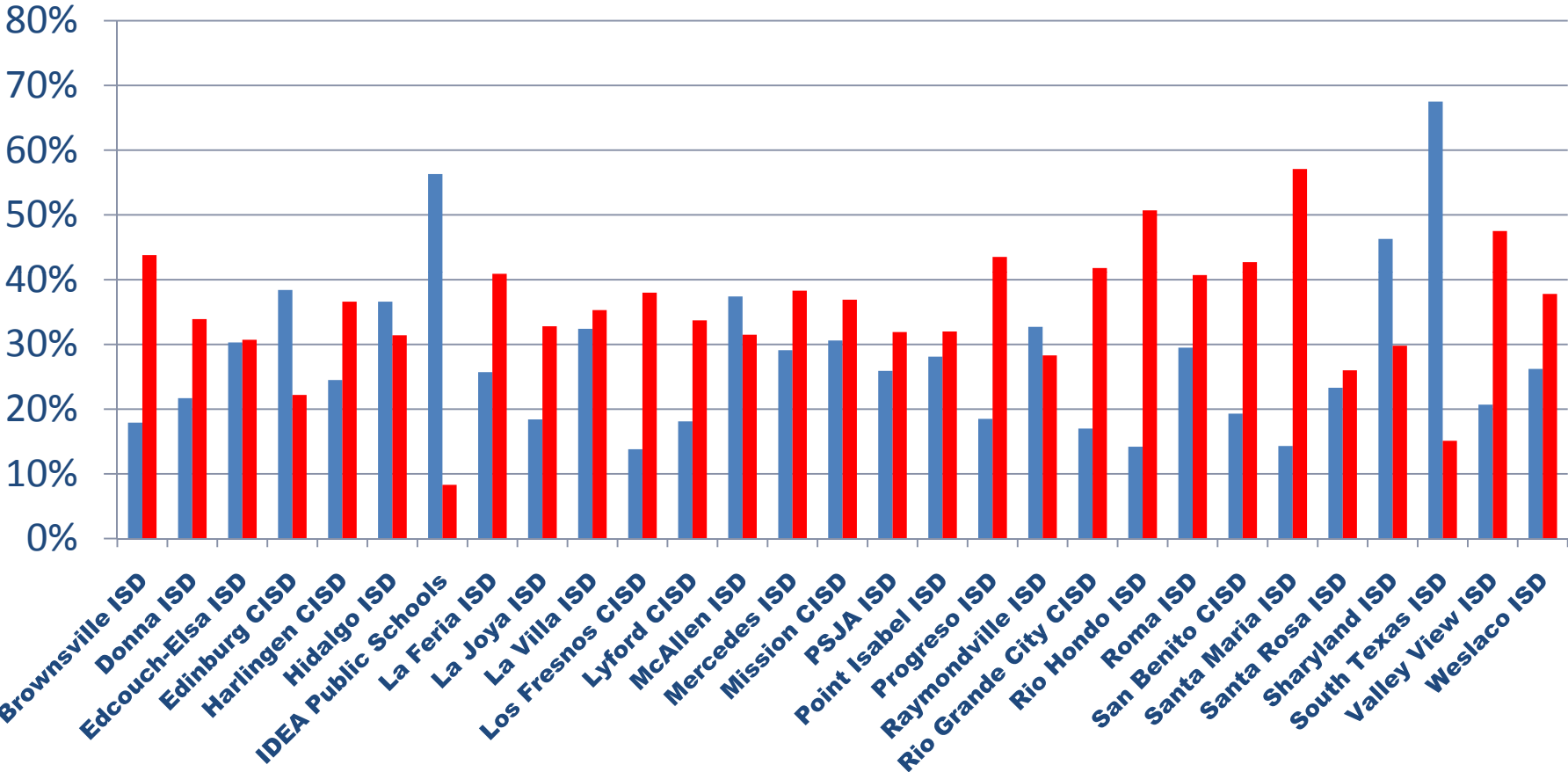
www.texashighereddata.org



Percent of HS Graduates 2009-10 Who Enrolled in Higher Education in Texas in Fall 2010



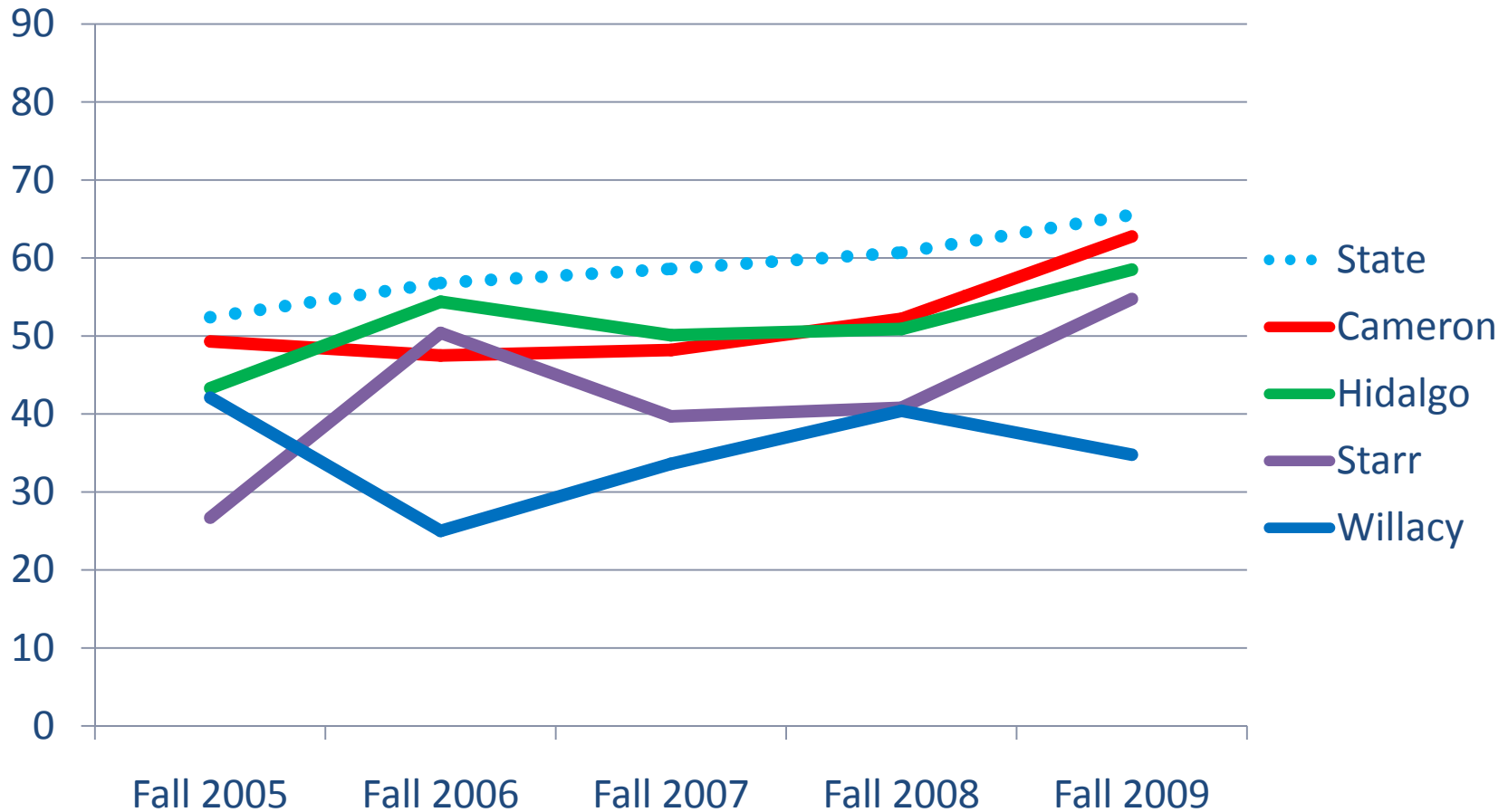
Percent of HS Graduates 2008-2009 Who Enrolled in Higher Education in Texas in FY 10 by Type of Institution



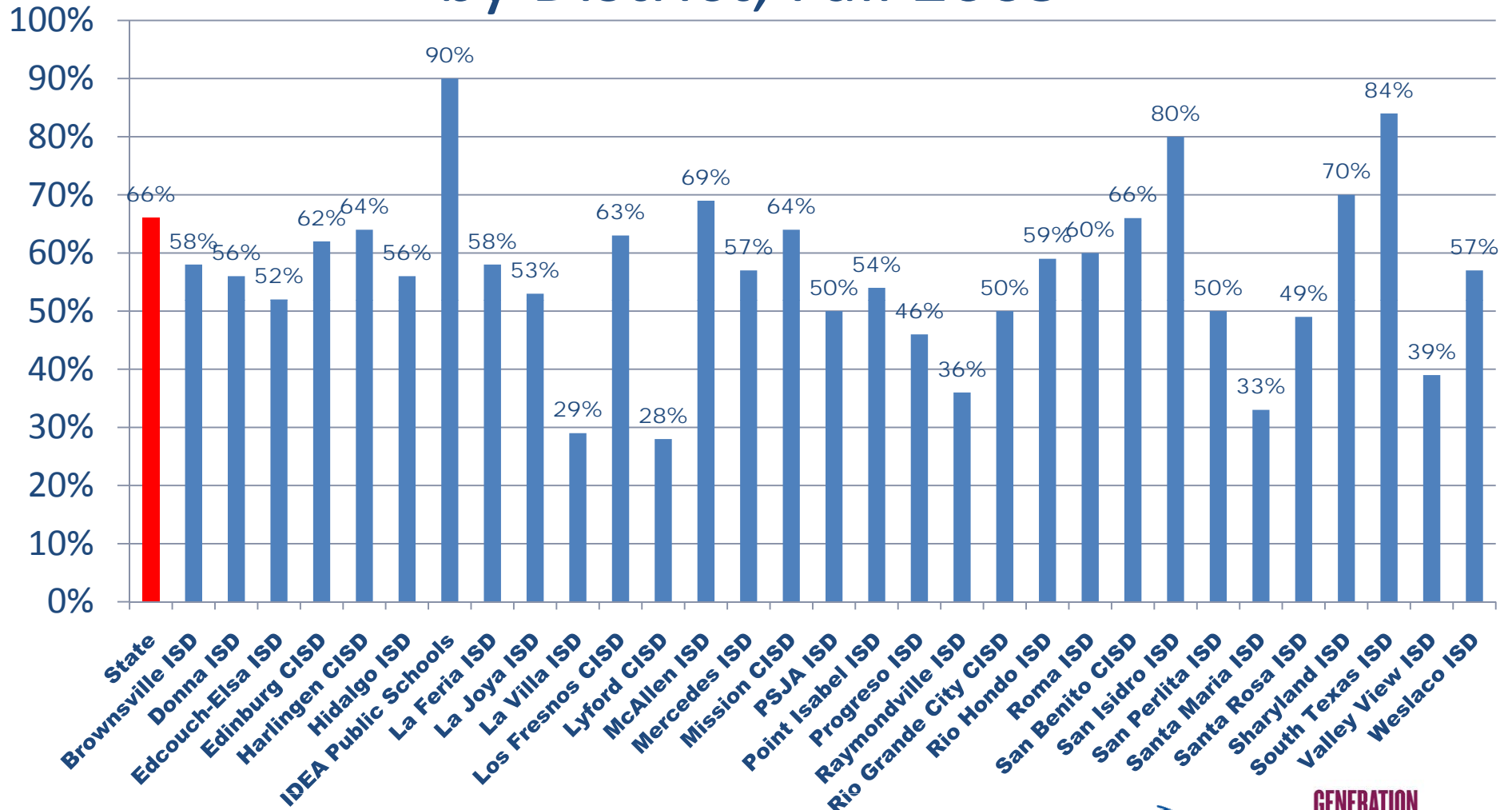
■ 4 year university ■ 2 year college



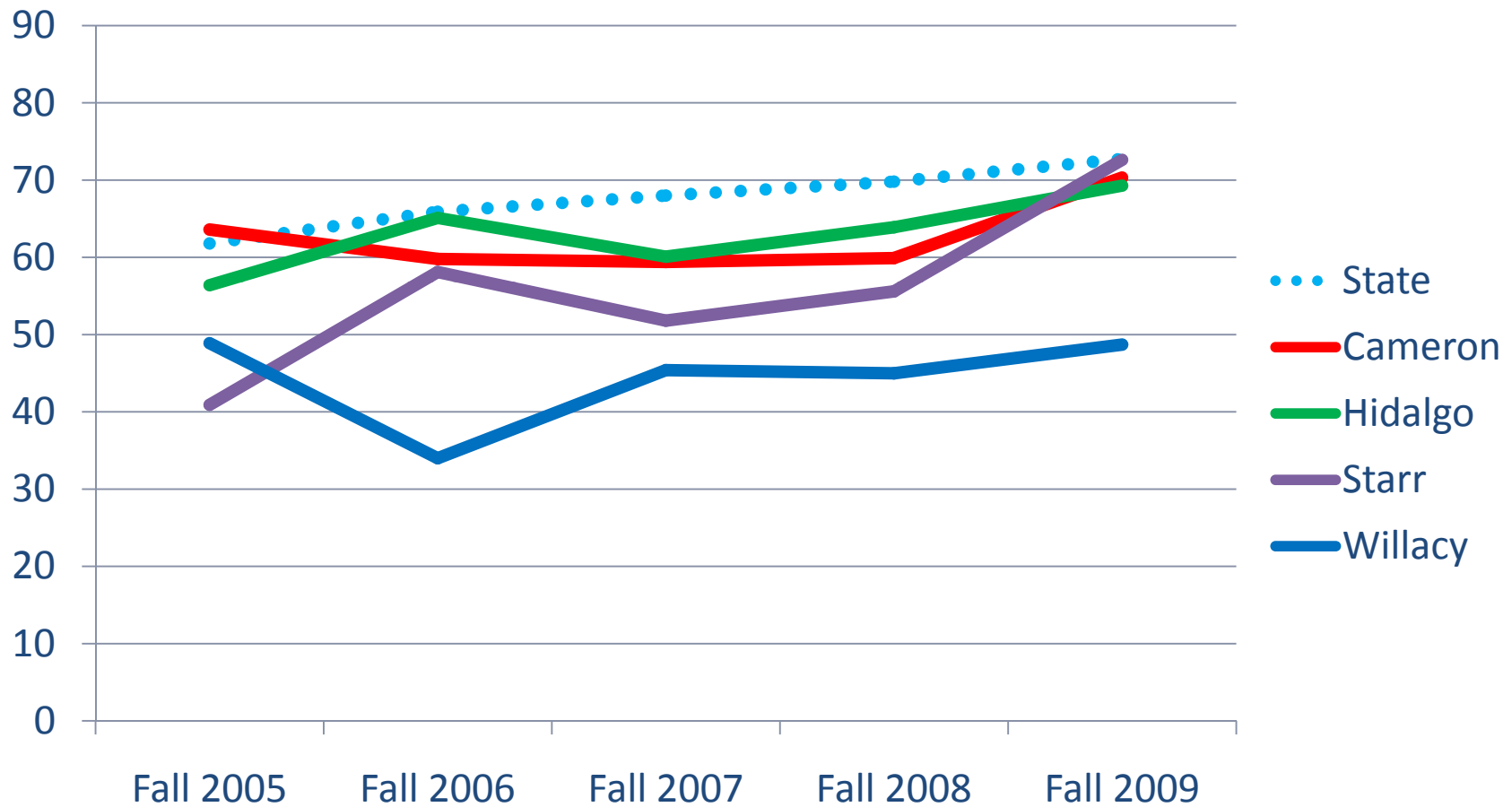
Met TSI Standards in All Areas by County, 2005-2009



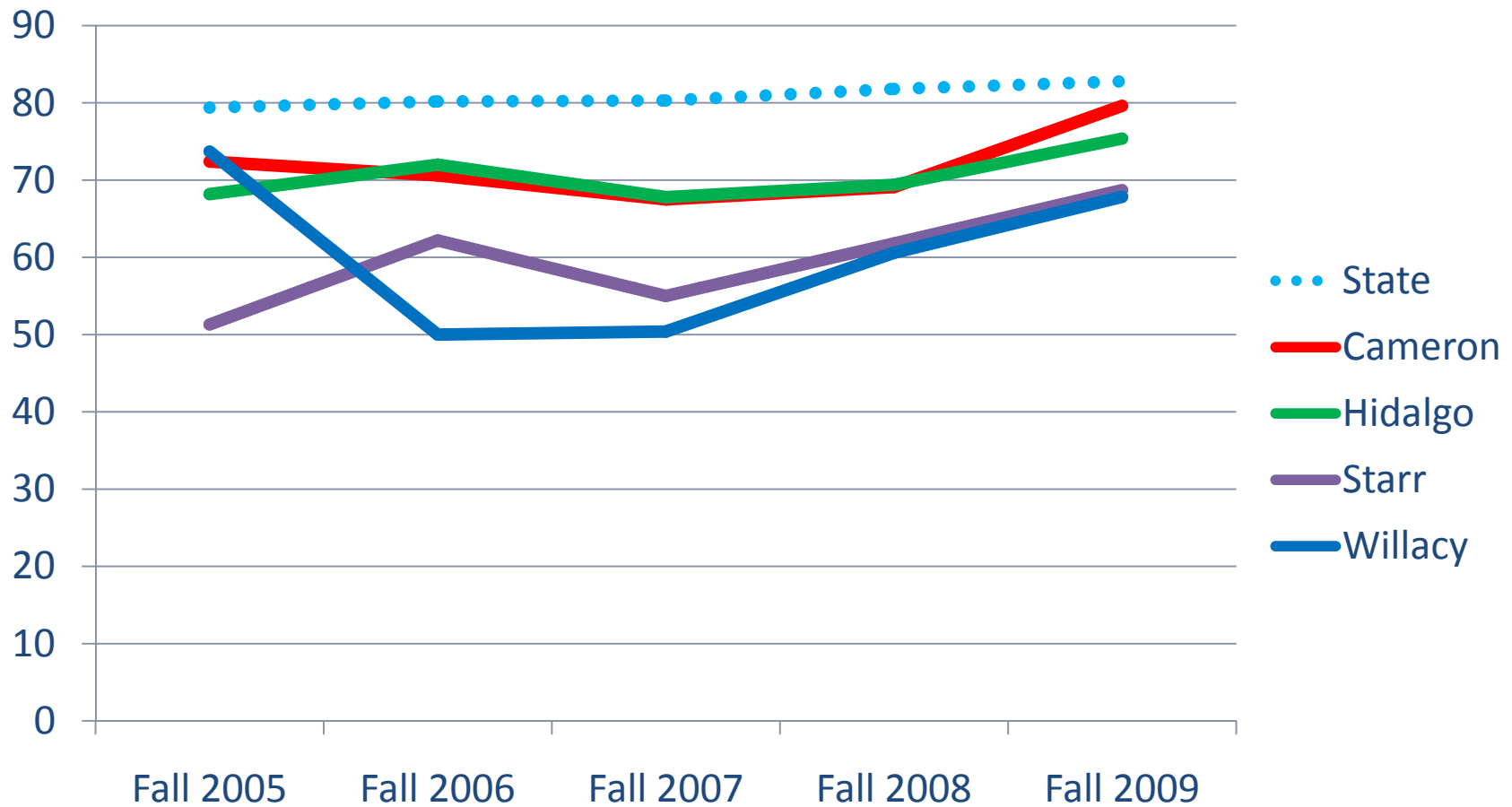
Met TSI Standards in All Areas by District, Fall 2009



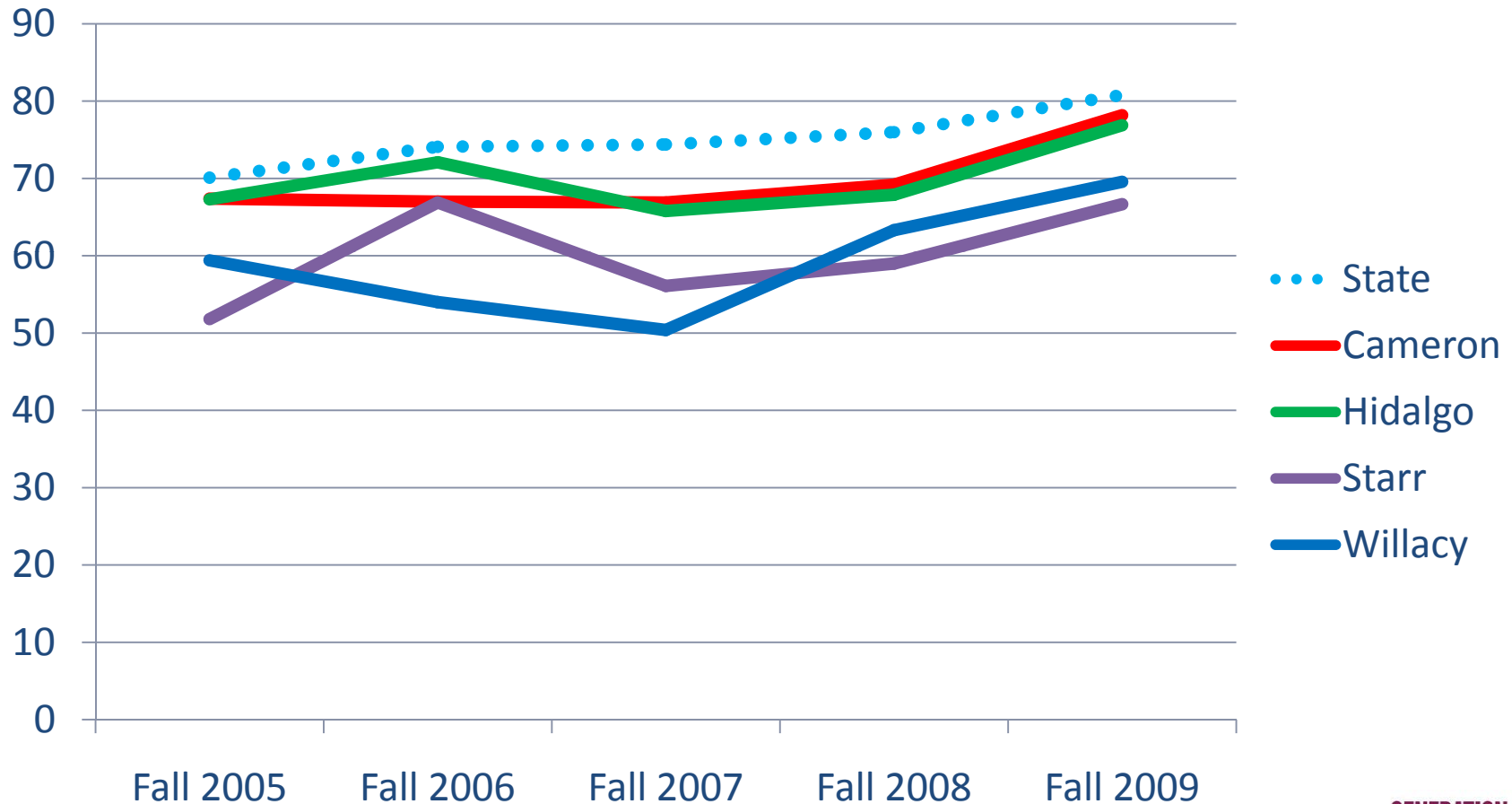
Met TSI Standards in Math by County, 2005-2009



Met TSI Standards in Writing by County, 2005-2009

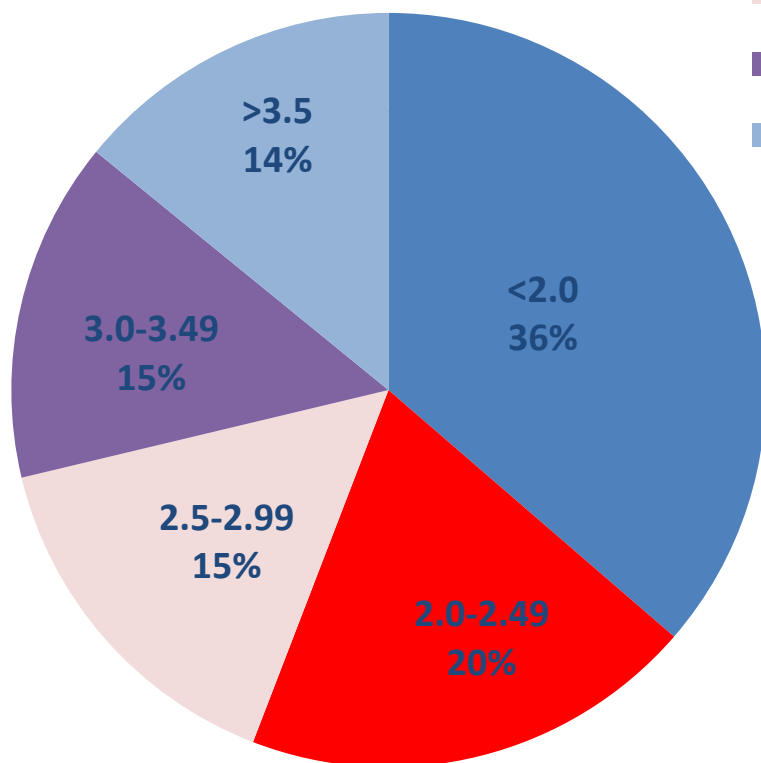


Met TSI Standards in Reading by County, 2005-2009

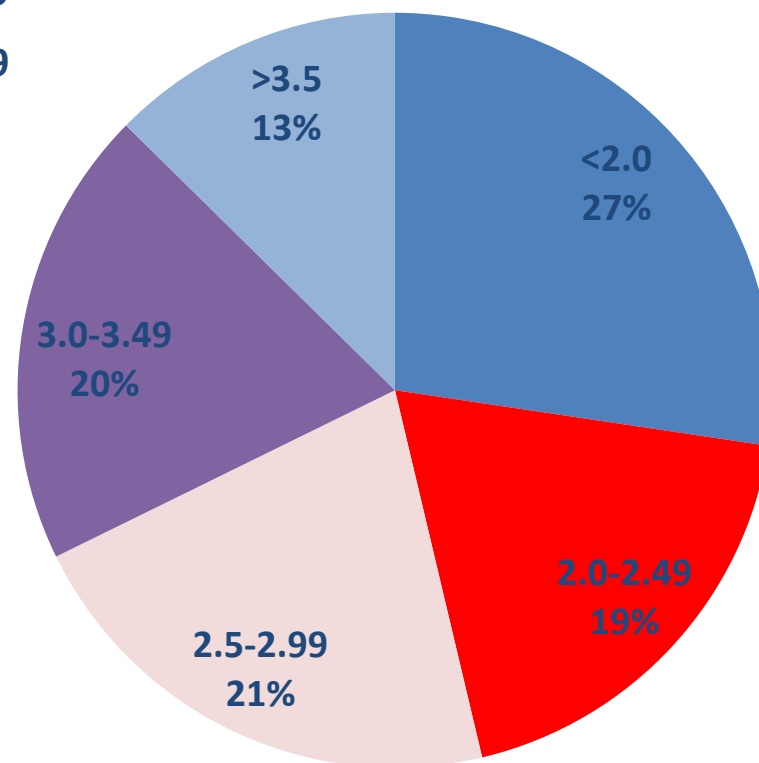


First Year GPA of Cameron County HS Graduates 2008-2009 Who Enrolled in Public Colleges in FY 2010

2 Year Colleges

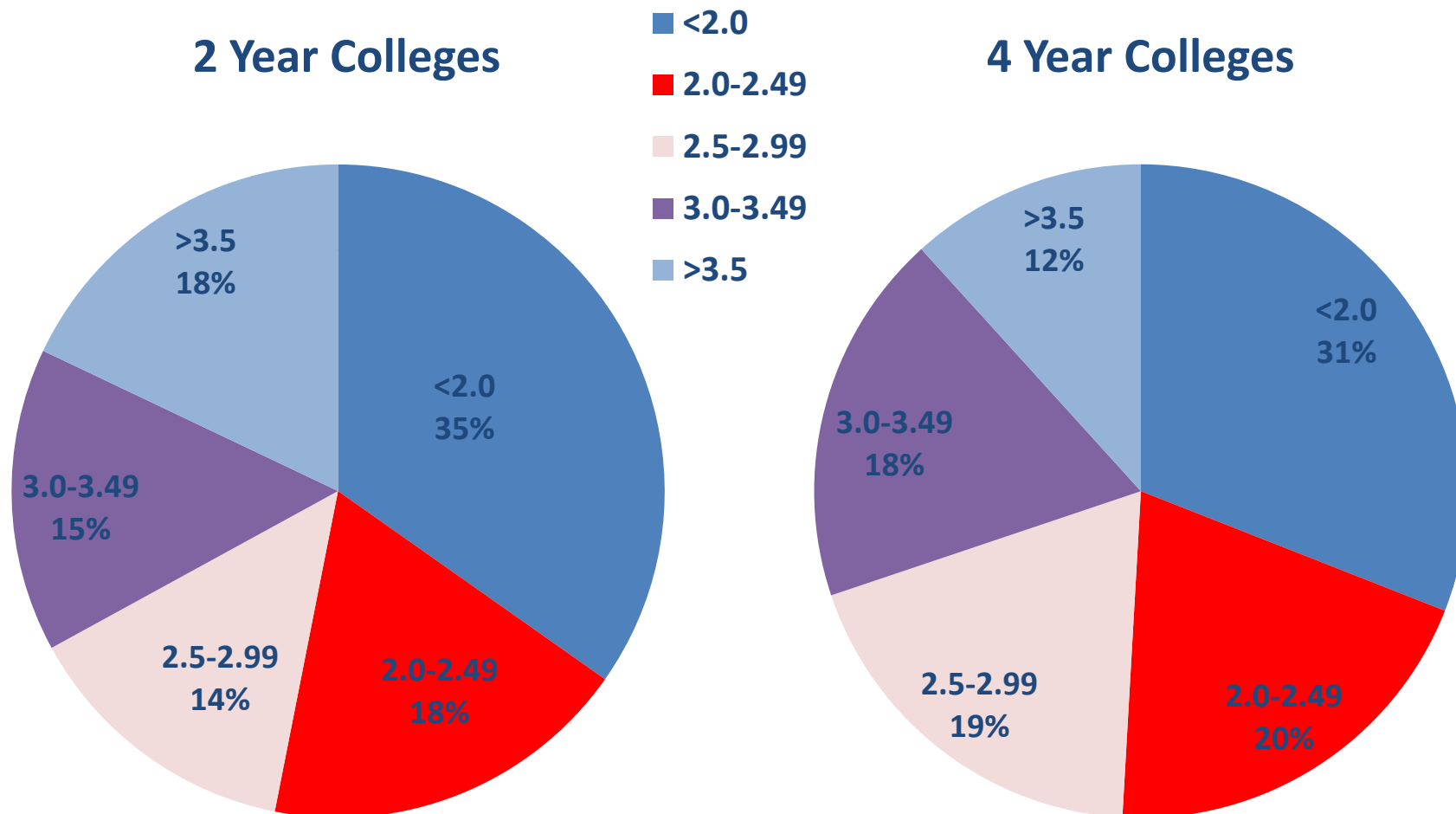


4 Year Colleges



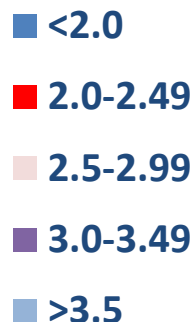
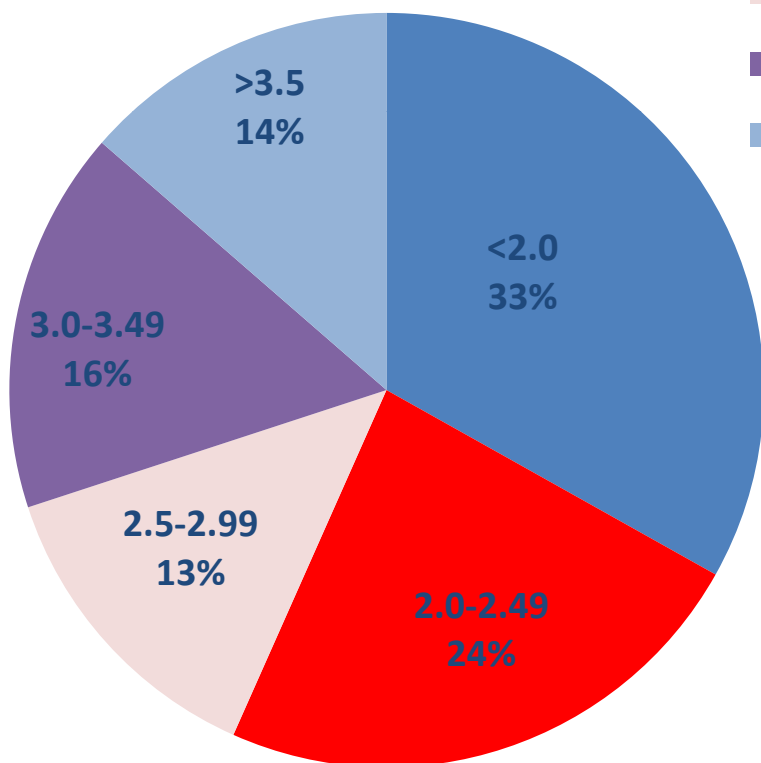
- <2.0
- 2.0-2.49
- 2.5-2.99
- 3.0-3.49
- >3.5

First Year GPA of Hidalgo County HS Graduates 2008-2009 Who Enrolled in Public Colleges in FY 2010

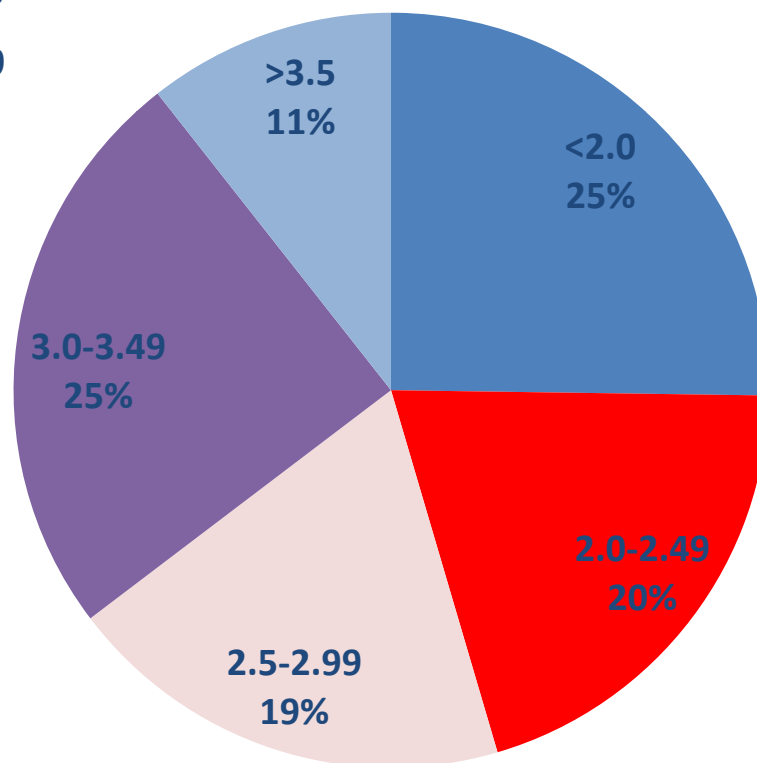


First Year GPA of Starr County HS Graduates 2008-2009 Who Enrolled in Public Colleges in FY 2010

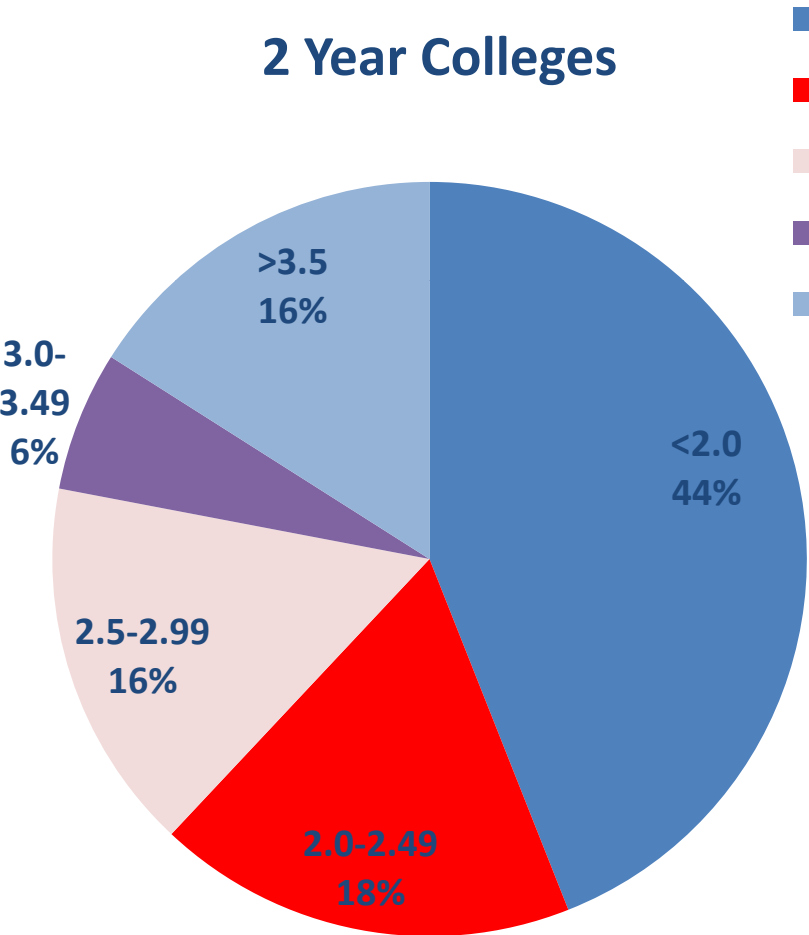
2 Year Colleges



4 Year Colleges



First Year GPA of Willacy County HS Graduates 2008-2009 Who Enrolled in Public Colleges in FY 2010



- <2.0
- 2.0-2.49
- 2.5-2.99
- 3.0-3.49
- >3.5

